



Note to Residents & Contractors

The Town of St. George is now getting planning and building inspection services through the Southwest New Brunswick Service Commission.



Please be advised that a permit and inspections are required when you:

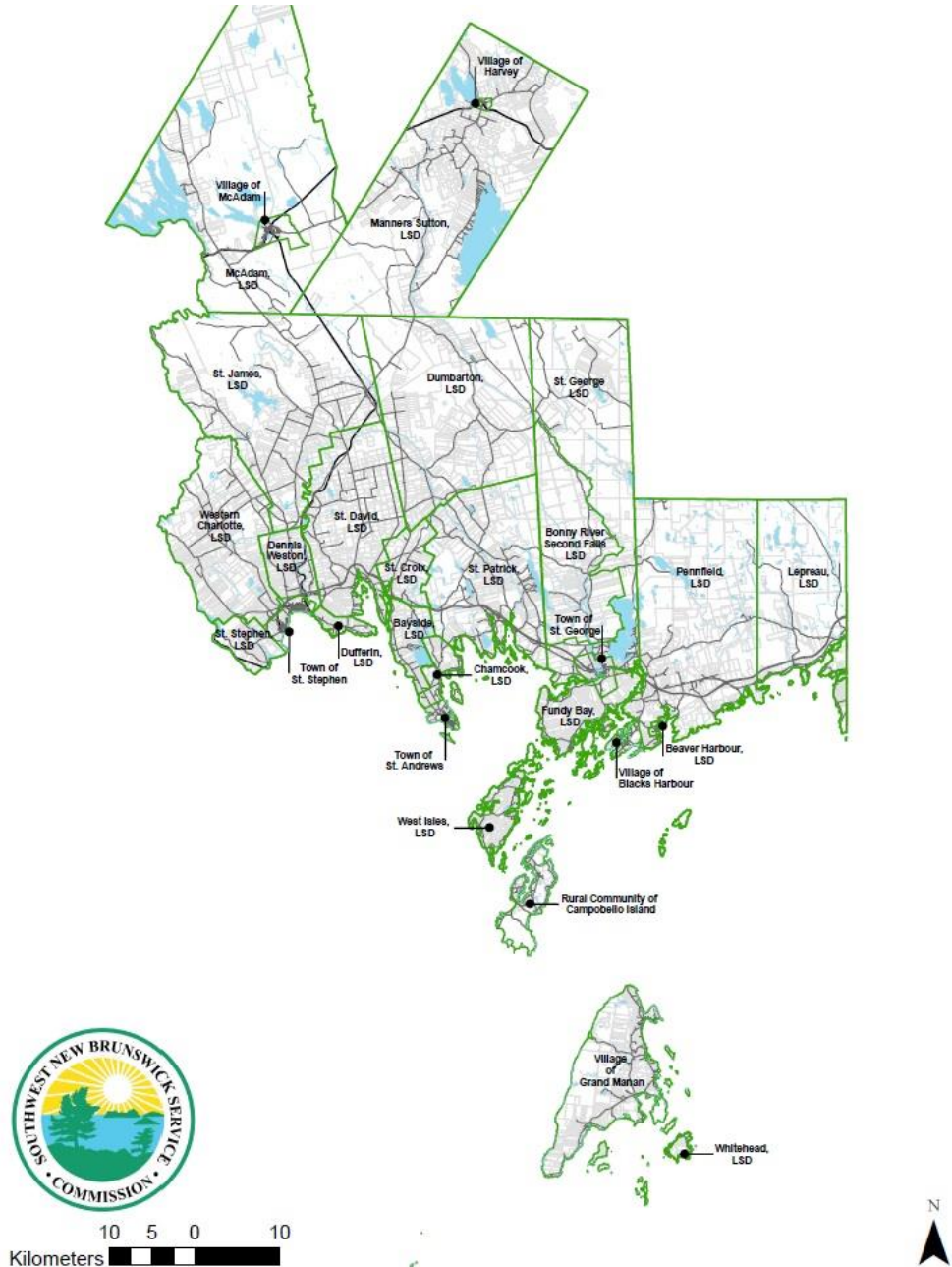
- Construct a new home
- Add to the existing home
- Excavate to provide a full basement or lower floors
- Alter any structural partitions
- Enclose a porch
- Erect storage buildings or garages
- Install or construct chimneys
- Place or relocate a mini or mobile home

Before you begin construction, please contact our office at **(506) 466-7369**. We would be happy to assist you in your project and answer any questions you may have about the process.

Building permit and subdivision application forms can be found online at www.snpsc.ca and sent via email to planning@snpsc.ca. Completed application forms can continue to be dropped off **in person** at Town Hall 1 School Street St George, NB.

Southwest New Brunswick
Service Commission
21 River Street, Suite A
St. Stephen NB E3L 3H2
planning@snpsc.ca
www.snpsc.ca

What is the Southwest New Brunswick Service Commission? We are a shared-services agency that covers Charlotte County and southern York County. We work for the eight municipalities and twenty local service districts in our region. We operate the landfill in Lawrence Station, which is the final destination of St. George's solid waste. We also provide planning & building inspection services.



Southwest New Brunswick
Service Commission
21 River Street, Suite A
St. Stephen NB E3L 3H2
planning@snbsc.ca
www.snbsc.ca